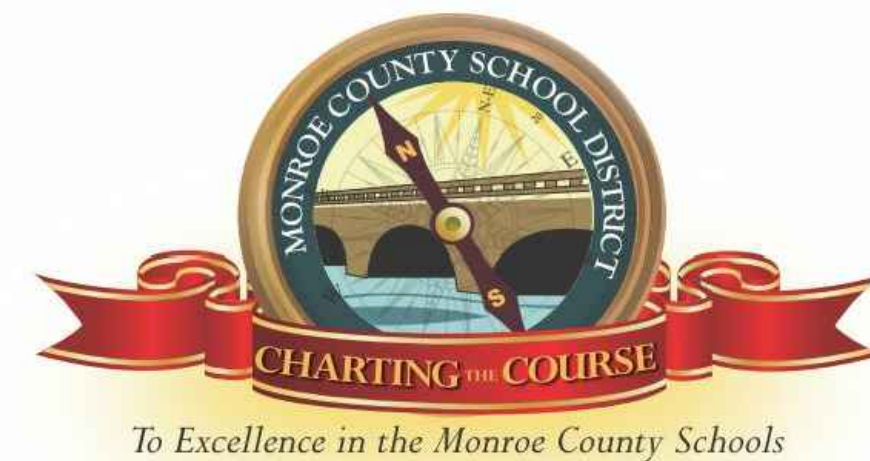


Key Largo School Chiller Replacement

PREPARED FOR
Monroe County School District
 241 Trumbo Road
 Key West, Florida 33040



SCHOOL BOARD MEMBERS
 District 1 - Bobby Highsmith
 District 2 - Andy Griffiths
 District 3 - Mindy Conn, Chair
 District 4 - John Dick, Vice Chair
 District 5 - Dr. Sue Woltanski

SUPERINTENDENT OF SCHOOLS
 Mark T. Porter

PREPARED BY
AGI Anston-Greenlees, Inc.
 Mechanical & Electrical Consulting Engineers
 1315 West Fletcher Avenue, Tampa, FL 33612 Tel(813)963-1919
 Email: AGI@agi-engineers.com HTTP://www.agi-engineers.com
 Florida Engineering Business Number 6093

February 19, 2020
 CONSTRUCTION DOCUMENTS

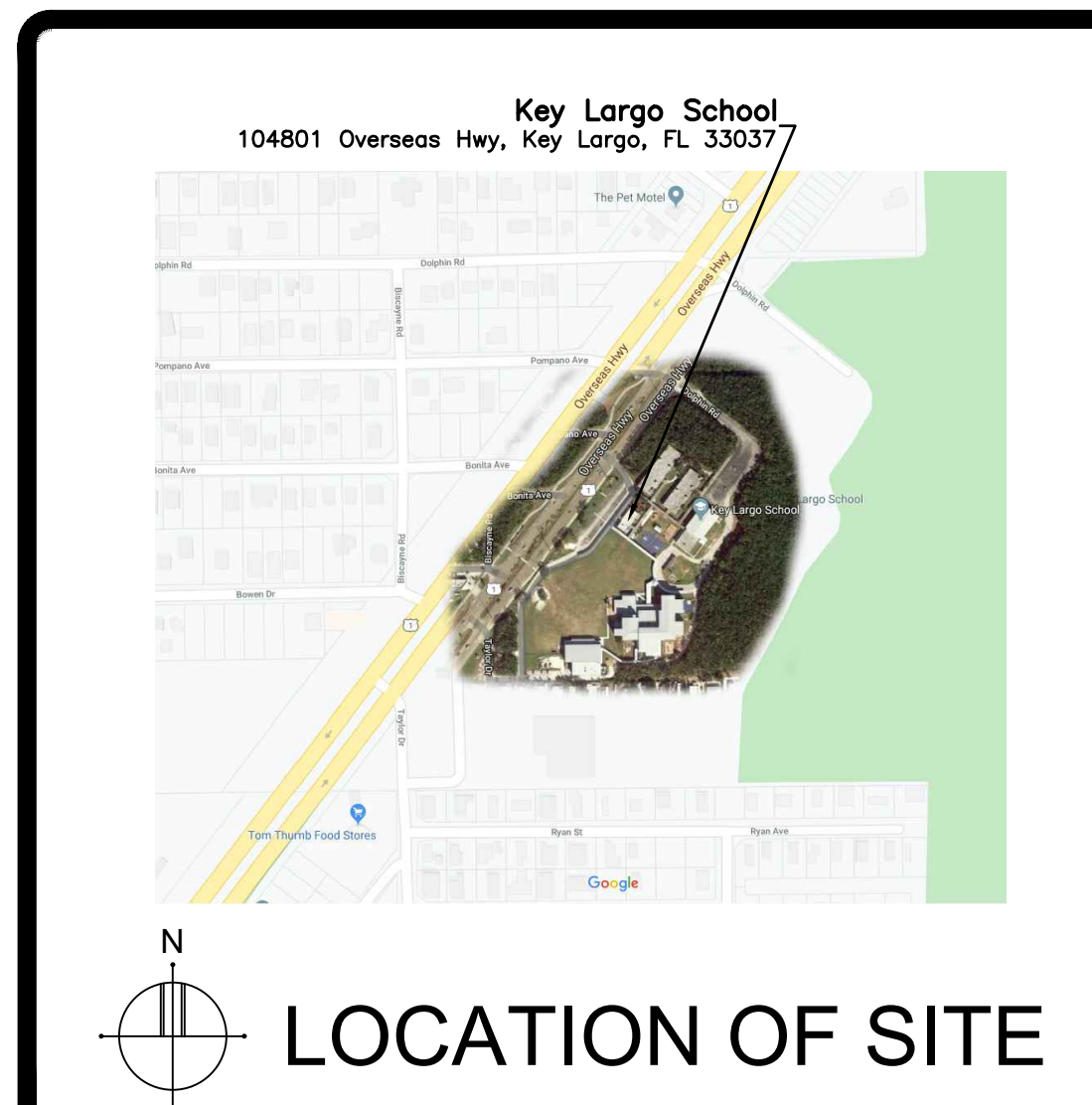
DRAWING INDEX

NUMBER	TITLE
-	COVER SHEET
M0.1	HVAC GENERAL NOTES, DETAILS, AND LEGEND
M1.1	BLDG 10 1ST FLOOR HVAC PLAN
M1.2	BLDG 10 2ND FLOOR HVAC PLAN
M1.3	BLDG 10 3RD FLOOR HVAC PLAN
M2.1	CHILLER YARD HVAC PLAN AND HVAC SCHEDULES
M2.2	HVAC SCHEDULES
M3.1	HVAC CONTROLS
E0.1	ELECTRICAL LEGEND, GENERAL NOTES, AND DETAILS
E1.1	BLDG 10 1ST FLOOR ELECTRICAL PLAN
E1.2	BLDG 10 2ND FLOOR ELECTRICAL PLAN
E1.3	BLDG 10 3RD FLOOR ELECTRICAL PLAN
E2.1	MECHANICAL EQUIPMENT CONNECTION SCHEDULE
E2.2	PANEL SCHEDULES

Key Largo School
 Chiller Replacement
 Monroe County School District
 241 Trumbo Road, Key West, Florida 33040



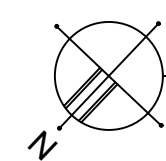
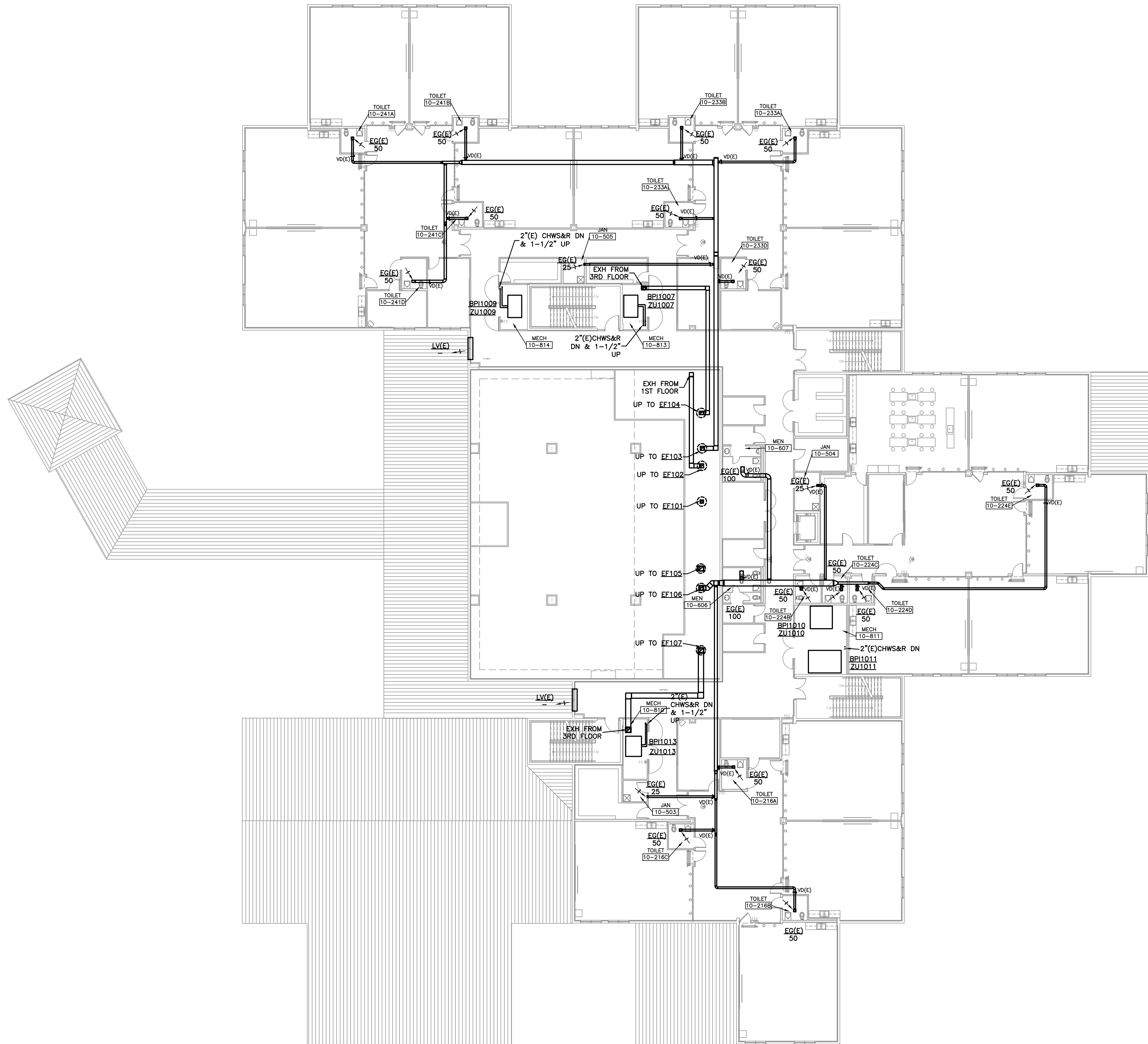
AGI Anston-Greenlees, Inc.
 Mechanical & Electrical Consulting Engineers
 1315 West Fletcher Avenue, Tampa, FL 33612 Tel(813)963-1919
 Email: AGI@agi-engineers.com HTTP://www.agi-engineers.com
 Florida Engineering Business Number 6093



DATE
 02.19.2020

JOB NO.
 19070

Plotting File: \\19066\19070\061\19070-12.dwg M12
 Plotted by: drcs Feb 19, 2020 5:59pm



BLDG 10 2ND FLOOR HVAC PLAN
 SCALE: 1/16" = 1'-0"

THIS ITEM HAS BEEN ELECTRONICALLY SIGNED AND SEALED BY
 STEPHEN R. HORNBER, P.E. ON THE DATETIME STAMP SHOWN USING
 A DIGITAL SIGNATURE. PRINTED COPIES OF THIS DOCUMENT ARE
 NOT CONSIDERED SIGNED AND SEALED AND THE SIGNATURE MUST
 BE VERIFIED IN ANY ELECTRONIC COPIES TO THE BEST OF MY
 KNOWLEDGE. THESE DRAWINGS AND THE PROJECT MANUAL ARE
 COMPLETE AND COMPLY WITH THE 2017 FLORIDA BUILDING CODE.

REVISIONS	DATE

**Key Largo School
 Chiller Replacement**

Monroe County School District
 241 Trumbo Road, Key West, Florida 33040



**BUILDING BRIDGES
 TO SUCCESS**

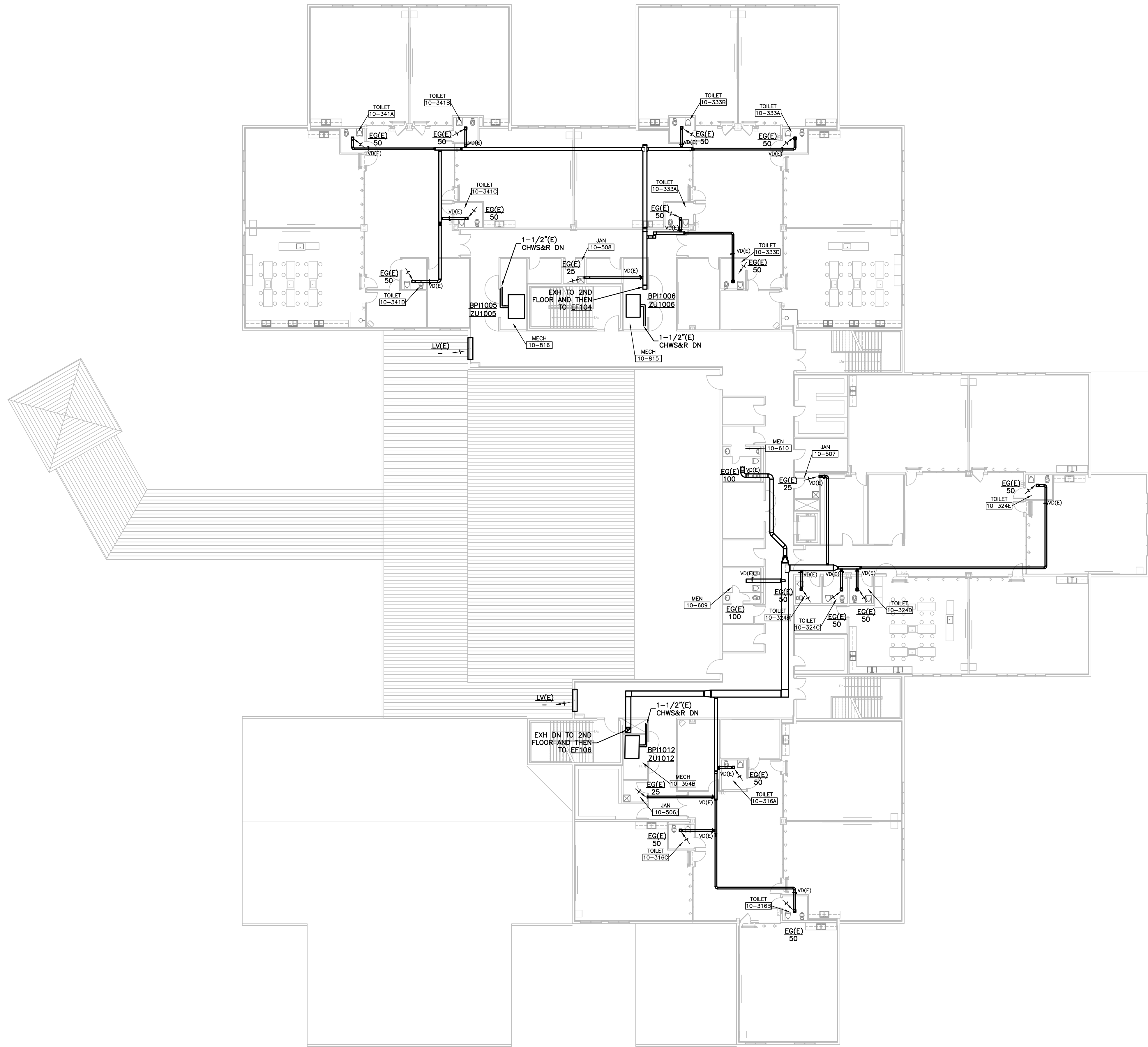
BLDG 10 2ND FLOOR HVAC PLAN

AGI
 Anston-Greenlees, Inc.
 Mechanical & Electrical Consulting Engineers
 11011 AGI Drive, Suite 100
 Fort Lauderdale, Florida 33324
 Phone: 954.349.1111
 Fax: 954.349.1112
 www.agiconsulting.com

DRAWN	CWR
CHECKED	SRF
DATE	02.19.2020
SCALE	AS NOTED
JOB NO.	19070
DRAWING NO.	

M1.2

Plotting File: \\1906\1\19070\061\19070-13.dwg M13
 Plotted by: drc Feb 19, 2020 5:59pm



BLDG 10 3RD FLOOR HVAC PLAN
 SCALE: 1/16" = 1'-0"

THIS ITEM HAS BEEN ELECTRONICALLY SIGNED AND SEALED BY
 STEPHEN R. HORNBER, P.E. ON THE DATETIME STAMP SHOWN USING
 A DIGITAL SIGNATURE. PRINTED COPIES OF THIS DOCUMENT ARE
 NOT CONSIDERED SIGNED AND SEALED AND THE SIGNATURE MUST
 BE VERIFIED IN ANY ELECTRONIC COPIES TO THE BEST OF MY
 KNOWLEDGE. THESE DRAWINGS AND THE PROJECT MANUAL ARE
 COMPLETE AND COMPLY WITH THE 2017 FLORIDA BUILDING CODE.

REVISIONS	DATE

**Key Largo School
 Chiller Replacement**
 Monroe County School District
 241 Trumbo Road, Key West, Florida 33040

BLDG 10 3RD FLOOR HVAC PLAN

Anston-Greenlees, Inc.
 Mechanical & Electrical Consulting Engineers
 11011 Atlantic Blvd., Suite 100
 Jacksonville, FL 32226
 (904) 444-1111
AGI
 Florida Engineering License Number 6875

DRAWN	CWR
CHECKED	SRF
DATE	02.19.2020
SCALE	AS NOTED
JOB NO.	19070
DRAWING NO.	M1.3

System No. W-L-1001
June 15, 2005

F Ratings — 1, 2, 3 and 4 Hr (See Items 2 and 3)
 T Rating — 0, 1, 2, 3, and 4 Hr (See Item 3)
 L Rating At Ambient — less than 1 CFM/sq ft
 L Rating At 400 F — less than 1 CFM/sq ft

SECTION A-A

FIRE-RATED WALL PENETRATION DETAIL FOR PIPE OR CONDUIT
NOT TO SCALE

- WALL ASSEMBLY — THE 1, 2, 3 OR 4 HR FIRE-RATED GYPSUM WALLBOARD/STUD WALL ASSEMBLY SHALL BE CONSTRUCTED OF THE MATERIALS AND IN THE MANNER DESCRIBED IN THE INDIVIDUAL L3000 OR L4000 SERIES WALL OR PARTITION DESIGNS IN THE UL FIRE RESISTANCE DIRECTORY AND SHALL INCLUDE THE FOLLOWING CONSTRUCTION FEATURES:
 - STUDS — WALL FRAMING MAY CONSIST OF EITHER WOOD STUDS (MAX 2 H FIRE RATED ASSEMBLIES) OR STEEL CHANNEL STUDS. WOOD STUDS TO CONSIST OF NOM 2 BY 4 IN. (51 BY 102 MM) LUMBER SPACED 16 IN. (406 MM) OC WITH NOM 2 BY 4 IN. (51 BY 102 MM) LUMBER END PLATES AND CROSS BRACES. STEEL STUDS TO BE MIN 3-5/8 IN. (92 MM) WIDE BY 1-3/8 IN. (35 MM) DEEP CHANNELS SPACED MAX 24 IN. (610 MM) OC.
 - GYPSUM BOARD* — NOM 1/2 OR 5/8 IN. (13 OR 16 MM) THICK, 4 FT. (122 CM) WIDE WITH SQUARE OR TAPERED EDGES. THE GYPSUM WALLBOARD TYPE, THICKNESS, NUMBER OF LAYERS, FASTENER TYPE AND SHEET ORIENTATION SHALL BE AS SPECIFIED IN THE INDIVIDUAL L3000 OR L4000 SERIES DESIGN IN THE UL FIRE RESISTANCE DIRECTORY. MAX DIAMETER OF OPENING IS 26 IN. (660 MM).
- THROUGH-PENETRANT — ONE METALLIC PIPE, CONDUIT OR TUBING INSTALLED EITHER CONCENTRICALLY OR ECCENTRICALLY WITHIN THE FIRESTOP SYSTEM. THE ANNULAR SPACE BETWEEN PIPE, CONDUIT OR TUBING AND PERIPHERY OF OPENING SHALL BE MIN OF 0 IN./ (0 MM). (POINT CONTACT) TO MAX 2 IN. (51 MM) PIPE, CONDUIT OR TUBING TO BE RIGIDLY SUPPORTED ON BOTH SIDES OF WALL ASSEMBLY. THE FOLLOWING TYPES AND SIZES OF METALLIC PIPES, CONDUITS OR TUBING MAY BE USED:

MAX PIPE OR CONDUIT DIAM. IN (MM)	F RATING HR	T RATING HR
1 (25)	1 or 2	0+, 1 or 2
1 (25)	3 or 4	3 or 4
4 (102)	1 or 2	0
6 (152)	3 or 4	0
12 (305)	1 or 2	0

A. STEEL PIPE — NOM 24 IN. (610 MM) DIAM (OR SMALLER) SCHEDULE 10 (OR HEAVIER) STEEL PIPE.
 B. IRON PIPE — NOM 24 IN. (610 MM) DIAMETER (OR SMALLER) SERVICE WEIGHT (OR HEAVIER) CAST IRON SOIL PIPE, NOM 12 IN (305 MM) DIAMETER (OR SMALLER) OR CLASS 50 (OR HEAVIER) DUCTILE IRON PRESSURE PIPE.
 C. CONDUIT — NOM 6 IN. (152 MM) DIAMETER (OR SMALLER) STEEL CONDUIT OR NOM 4 IN (102 MM) DIAMETER (OR SMALLER) STEEL ELECTRICAL METALLIC TUBING
 D. COPPER TUBING — NOM 6 IN. (152 MM) DIAMETER (OR SMALLER) TYPE L (OR HEAVIER) COPPER TUBING
 E. COPPER PIPE — NOM 6 IN. (152 MM) DIAMETER (OR SMALLER) REGULAR (OR HEAVIER) COPPER PIPE.
 F. THROUGH PENETRATING PRODUCT* — FLEXIBLE METAL PIPING THE FOLLOWING TYPES OF STEEL FLEXIBLE METAL GAS PIPING MAY BE USED:

- NOM 2 IN. (51 MM) DIAMETER (OR SMALLER) STEEL FLEXIBLE METAL GAS PIPING. PLASTIC COVERING ON PIPING MAY OR MAY NOT BE REMOVED ON BOTH SIDES OF FLOOR OR WALL ASSEMBLY. OMEGA FLEX INC
- NOM 1 IN. (25 MM) DIAMETER (OR SMALLER) STEEL FLEXIBLE METAL GAS PIPING. PLASTIC COVERING ON PIPING MAY OR MAY NOT BE REMOVED ON BOTH SIDES OF FLOOR OR WALL ASSEMBLY. GASTITE, DIV OF TITFLEX
- NOM 1 IN. (25 MM) DIAMETER (OR SMALLER) STEEL FLEXIBLE METAL GAS PIPING. PLASTIC COVERING ON PIPING MAY OR MAY NOT BE REMOVED ON BOTH SIDES OF FLOOR OR WALL ASSEMBLY. WARD MFG L L C

3. FILL, VOID OR CAVITY MATERIAL* — CAULK OR SEALANT — MIN 5/8, 1-1/4, 1-7/8 AND 2-1/2 IN. (16, 32, 48 AND 64 MM) THICKNESS OF CAULK FOR 1, 2, 3 AND 4 HR RATED ASSEMBLIES, RESPECTIVELY, APPLIED WITHIN ANNULUS, FLUSH WITH BOTH SURFACES OF WALL. MIN 1/4 IN. (6 MM) DIAMETER BEAD OF CAULK APPLIED TO GYPSUM BOARD/PENETRANT INTERFACE AT POINT CONTACT LOCATION ON BOTH SIDES OF WALL. THE HOURLY F RATING OF THE FIRESTOP SYSTEM IS DEPENDENT UPON THE HOURLY FIRE RATING OF THE WALL ASSEMBLY IN WHICH IT IS INSTALLED, AS SHOWN IN THE FOLLOWING TABLE. THE HOURLY T RATING OF THE FIRESTOP SYSTEM IS DEPENDENT UPON THE TYPE OR SIZE OF THE PIPE OR CONDUIT AND THE HOURLY FIRE RATING OF THE WALL ASSEMBLY IN WHICH IT IS INSTALLED, AS TABULATED BELOW:

MAX PIPE OR CONDUIT DIAM. IN (MM)	F RATING HR	T RATING HR
1 (25)	1 or 2	0+, 1 or 2
1 (25)	3 or 4	3 or 4
4 (102)	1 or 2	0
6 (152)	3 or 4	0
12 (305)	1 or 2	0

*INDICATES SUCH PRODUCTS SHALL BEAR THE UL OR CUL CERTIFICATION MARK FOR JURISDICTIONS EMPLOYING THE UL OR CUL CERTIFICATION (SUCH AS CANADA), RESPECTIVELY.
 +WHEN COPPER PIPE IS USED, T RATING IS 0 H.
 3M COMPANY — CP 25WB+ OR FB-3000 WT.
 LAST UPDATED ON 2005-06-15

ELECTRICAL LEGEND		
SYMBOL	DESCRIPTION	MOUNTING
	BRANCH CIRCUIT CONDUIT AND WIRE CONCEALED ABOVE CEILING OR BEHIND FINISHED WALL	N/A
	BRANCH CIRCUIT CONDUIT AND WIRE CONCEALED BELOW FINISHED FLOOR OR UNDERGROUND.	N/A
	RACEWAY EXPOSED ON WALL OR CEILING	N/A
	HOMERUN TO PANELBOARD — LETTER INDICATES PANEL, NUMBER INDICATES CIRCUIT, MINIMUM 3/4" CONDUIT. NOTE: ANY HOMERUN WITHOUT FURTHER DESIGNATION INDICATES TWO #12 AWG AND #12 AWG EQUIPMENT GROUND. PC OUTLET REQUIRES SEPARATE NEUTRAL, MIN. #10 AWG. DEDICATED CIRCUIT REQUIRES SEPARATE NEUTRAL	N/A
	RACEWAY RISER, UP OR DOWN AS NOTED	N/A
	CONDUIT CAPPED	N/A
	COMMUNICATIONS OUTLETS W/REQUIRED CAT 6 CABLING IN 1" CONDUIT. # DESIGNATES QUANTITY OF CABLES & RJ45 JACKS. SEE DETAILS AND SPECIFICATIONS FOR MORE INFO. PROVIDE 4" SQUARE X 2.5" DEEP OUTLET BOX. WA DENOTES WIRELESS ACCESS POINT	M.H. 16" AFF TO BOTTOM OR AS NOTED
	COMMUNICATIONS OUTLET BOX WITH BLANK COVER AND 1" CONDUIT WITH BUSHING STUBBED INTO CEILING SPACE.	M.H. 18" AFF TO BOTTOM
	SINGLE RECEPTACLE — 120VAC	M.H. 16" AFF TO BOTTOM
	DUPLEX RECEPTACLE — 120VAC	M.H. 16" AFF TO BOTTOM
	DUPLEX RECEPTACLE — 120VAC	MOUNTED 42" AFF TO BOTTOM OR AS NOTED
	DOUBLE DUPLEX RECEPTACLE — 120VAC	M.H. 16" AFF TO BOTTOM
	DOUBLE DUPLEX RECEPTACLE — 120VAC	MOUNTED 42" AFF TO BOTTOM OR AS NOTED
	DUPLEX RECEPTACLE — 120VAC. COMPUTER OUTLET WITH SEPARATE NEUTRAL, MIN. #10 AWG	M.H. 16" AFF TO BOTTOM
	DOUBLE DUPLEX RECEPTACLE — 120VAC. COMPUTER OUTLET WITH SEPARATE NEUTRAL, MIN. #10 AWG	M.H. 16" AFF TO BOTTOM
	DUPLEX RECEPTACLE — 120VAC. LETTER NEXT TO DEVICE INDICATES THE FOLLOWING: 'WP' = WEATHERPROOF TYPE (IN USE TYPE). 'GFI' = GROUND FAULT PROTECTION TYPE. 'DL' = DAMP LOCATION WEATHERPROOF COVER (NOT IN USE TYPE). 'TP' = TAMPER PROOF.	M.H. 16" AFF TO BOTTOM
	120/208 VOLT POWER PANELBOARD	M.H. 6'-0" TO TOP OR AS NOTED
	277/480 VOLT POWER PANELBOARD	M.H. 6'-0" TO TOP OR AS NOTED
	NON-FUSIBLE SWITCH	M.H. 6'-0" TO TOP OR AS NOTED
	FUSIBLE SAFETY SWITCH	M.H. 6'-0" TO TOP OR AS NOTED
	COMBINATION FUSIBLE DISCONNECT AND MOTOR STARTER	AS NOTED
	MOTOR CONNECTION	AS NOTED
	ELECTRIC HEAT STRIP	AS NOTED
	RED "MUSHROOM HEAD" TYPE PUSH-BUTTON SWITCH. "EPO" TYPE REQUIRES KEY RESET WITH CONTACTOR.	M.H. 48" A.F.F. TO TOP OR AS NOTED
	DEVICE AS NOTED	AS NOTED
	MOTOR/HP RATED TOGGLE SWITCH SIZED PER MOTOR MANUFACTURER'S RECOMMENDATION, MINIMUM 20 AMP.	SURFACE, ADJACENT TO OR ON MOTOR
	JUNCTION BOX OR OUTLET BOX, 4" SQUARE BOX UNLESS OTHERWISE NOTED	AS NOTED

THIS IS A STANDARD LEGEND. NOT ALL DEVICES SHOWN ARE USED IN THESE DOCUMENTS.

EXAMPLE

'AH1'
 480Y/277V, 3Ø, 4W.
 FED FROM PANEL 'AC'
 CIR-1,3,5

NOTES:
 PROVIDE NAMEPLATE LABELS ON ALL EQUIPMENT. EACH NAME PLATE SHALL HAVE THE FOLLOWING INFORMATION:
 1. EQUIPMENT NAME.
 2. VOLTAGE AND PHASE.
 3. LOCATION FROM WHICH EQUIPMENT IS BEING FED FROM. INCLUDE CIRCUIT NUMBERS.

TYPICAL NAMEPLATE DETAIL
NOT TO SCALE

- ELECTRICAL GENERAL NOTES:**
(THESE NOTES APPLY TO ALL SHEETS)
- ALL ELECTRICAL WORK SHALL MEET ALL OF THE REQUIREMENTS OF THE FOLLOWING:
 - FLORIDA BUILDING CODE (FBC) 6TH EDITION (2017); THIS CODE INCLUDES THE 2017 FBC BUILDING, MECHANICAL, PLUMBING, ENERGY CONSERVATION, FUEL GAS, ACCESSIBILITY, AND TEST PROTOCOLS VOLUMES. FURTHER, SEE "REFERENCED STANDARDS" IN THE FBC BUILDING CHAPTER 35; FBC MECHANICAL CHAPTER 15; FBC PLUMBING CHAPTER 14; FBC ENERGY CONSERVATION CHAPTER 6; AND FBC FUEL GAS CHAPTER 8) (EFFECTIVE DECEMBER 31, 2017)
 - 6TH EDITION OF THE FLORIDA FIRE PREVENTION CODE (FFPC); (THIS CODE ALSO INCLUDES THE FLORIDA VERSIONS OF NFPA 1 AND NFPA 101.) (EFFECTIVE DECEMBER 31, 2017)
 - 2014 NATIONAL ELECTRIC CODE
 - 2014 STATE REQUIREMENTS FOR EDUCATIONAL FACILITIES (SREF); (EFFECTIVE NOVEMBER 4, 2014)
 - IT IS THE CONTRACTOR'S RESPONSIBILITY TO VISIT THE SITE AND VERIFY THE EXISTING CONDITIONS TO GAIN KNOWLEDGE OF THE SCOPE OF WORK INVOLVED.
 - "PROVIDE" SHALL MEAN "FURNISH AND INSTALL".
 - IN GENERAL, THESE DRAWINGS ARE SCHEMATIC IN NATURE AND SHOULD NOT BE SCALED. IT SHALL NOT BE THE INTENT OF THESE PLANS AND/OR SPECIFICATIONS TO SHOW EVERY MINOR DETAIL OF CONSTRUCTION. PROVIDE ALL ITEMS NECESSARY FOR A COMPLETE AND OPERATIONAL SYSTEM.
 - ELECTRICAL INSTALLATION SHALL BE CLOSELY COORDINATED WITH ALL OTHER TRADES. REVIEW THE ENTIRE SET OF DOCUMENTS FOR COORDINATION. NO COST SHALL BE ASSOCIATED WITH ILL-TIMED INSTALLATION INCLUDING ANY REPAIRS OR REPLACEMENTS.
 - ALL CONDUITS AND BOXES SHALL BE CONCEALED UNLESS OTHERWISE NOTED. ALL CONDUIT RUNS ARE SCHEMATIC IN NATURE. EXACT ROUTING TO BE DETERMINED IN THE FIELD UNLESS OTHERWISE NOTED.
 - APPLY A BITUMASTIC COATING FOR ALL CONDUITS PENETRATING FLOOR SLABS FROM BELOW GRADE.
 - PROVIDE ALL REQUIRED PULL BOXES, JUNCTION BOXES, ETC. FOR A COMPLETE INSTALLATION.
 - PATCH, REPAIR AND REPAINT ALL WALLS THAT HAVE BEEN DAMAGED DUE TO ELECTRICAL ROUGH-IN. REMOVE ANY UNUSED CONDUIT AND WIRE.
 - PROVIDE FIRE-STOPPING AT ALL FIRE WALL PENETRATIONS. USE A U.L. APPROVED SYSTEM LISTED FOR THE ASSOCIATED INSTALLATION.
 - ALL CONDUCTORS SHALL BE STRANDED COPPER, THHN/THWN, MINIMUM #12 AWG. ALL CONDUCTORS SHALL BE IN CONDUIT. FLEXIBLE CONDUIT SHALL BE LIMITED TO A MAXIMUM OF 6'-0" IN LENGTH.
 - MC CABLE OR OTHER PREMANUFACTURED CABLING SHALL NOT BE USED UNLESS APPROVED BY THE OWNER AND ENGINEER.
 - ALL CIRCUITS SHALL CONTAIN A SEPARATE, GREEN, COPPER GROUNDING CONDUCTOR.
 - ALL RECEPTACLES SHALL HAVE A GROUND TERMINAL.
 - WHEN RECURSING OR EXTENDING EXISTING CIRCUITS, VERIFY ALL CIRCUIT NUMBERS AND VERIFY ANY EXISTING LOAD. CIRCUITS MAY BE PICKED UP AT AN EXISTING JUNCTION BOX IF AVAILABLE RATHER THAN PROVIDING A SEPARATE HOMERUN TO A PANEL.
 - RECESSED LIGHTING FIXTURES SHALL BE SUPPORTED FROM THE STRUCTURE AT (4) POINTS. DO NOT SUPPORT FIXTURES FROM THE CEILING GRID, MECHANICAL PIPING, DUCTWORK, CONDUIT OR OTHER NON-STRUCTURAL BUILDING MEMBERS. PROVIDE SUPPLEMENTAL STEEL AS REQUIRED FOR INSTALLATION.
 - THE COLOR OF ALL RECEPTACLES, TOGGLE SWITCHES AND COVERPLATES SHALL BE VERIFIED WITH THE ARCHITECT PRIOR TO ORDERING.
 - PANELBOARDS SHALL BE ACCURATELY LABELED TO IDENTIFY FINAL CIRCUIT NUMBERS UTILIZED, THEIR LOAD AND LOCATION.
 - ALL HVAC CONTROLS CONDUIT SHALL BE FURNISHED AND INSTALLED BY DIVISION 26 IN ACCORDANCE WITH DIVISION 26 REQUIREMENTS. ALL LOW VOLTAGE (120V AND UNDER) HVAC CONTROL WIRING FOR DIVISION 23 EQUIPMENT AND DEVICES SHALL BE PROVIDED BY DIVISION 26, INSTALLED IN ACCORDANCE WITH REQUIREMENTS OF DIVISION 26. REFER TO SPECIFICATION SECTION HVAC CONTROLS — 23 0900 AND THE HVAC CONTROLS SPECIFIED ON THE DRAWINGS. FOR CONTROLS RACEWAYS, BOXES AND WIRING TO BE PROVIDED BY DIVISION 26.
 - ALL EXTERIOR FASTENERS, ANCHORS, SUPPORTS, AND MOUNTING HARDWARE SHALL BE HOT DIPPED GALVANIZED OR STAINLESS STEEL.
 - PROVIDE FIRE RETARDANT U.L. APPROVED SEALANT ON ALL PENETRATIONS OF FIRE RATED PARTITIONS, WALLS AND STRUCTURAL SLABS. IT SHALL BE THE RESPONSIBILITY OF THE CONTRACTOR TO VERIFY, PRIOR TO SUBMITTING BID, LOCATIONS OF ALL SUCH FIRE RATED PARTITIONS, WALL AND STRUCTURAL SLABS.
 - SEE SPECIFICATION FOR ADDITIONAL REQUIREMENTS.

ABBREVIATIONS:

AFF	ABOVE FINISHED FLOOR	GWB	GYPSUM WALL BOARD
AFG	ABOVE FINISHED GRADE	H.D.	HAND DRYER
E	EXISTING	INT	INTERCOM/PAGING CABINET
ETR	EXISTING TO REMAIN	MTG	MOUNTING
EWC	ELECTRIC WATER COOLER	MTD	MOUNTED
EWH	ELECTRIC WATER HEATER	M.H.	MOUNTING HEIGHT
EG	EQUIPMENT GROUND	N/A	NOT APPLICABLE
ESB	ENERGY SAVING BALLAST	PROJ	PROJECTOR LOCATION
EXP	EXPLOSION PROOF	U.O.N.	UNLESS OTHERWISE NOTED
FACP	FIRE ALARM CONTROL PANEL	R	REMOVE
FATC	FIRE ALARM TERMINAL CABINET	RL	RELOCATED
GFI	GROUND FAULT PROTECTION	WP	WEATHER PROOF
G, GND	GROUND		

ELECTRICAL DRAWING INDEX

E0.1	ELECTRICAL LEGEND, GENERAL NOTES, AND DETAILS
E1.1	BLDG 10 1ST FLOOR ELECTRICAL PLAN
E1.2	BLDG 10 2ND FLOOR ELECTRICAL PLAN
E1.3	BLDG 10 3RD FLOOR ELECTRICAL PLAN
E2.1	MECHANICAL EQUIPMENT CONNECTION SCHEDULE
E2.2	PANEL SCHEDULES

THIS ITEM HAS BEEN ELECTRONICALLY SIGNED AND SEALED BY
 ROBERT C. ANSTON, P.E. ON THE DATE/TIME STAMP SHOWN USING A
 DIGITAL SIGNATURE. PRINTED COPIES OF THIS DOCUMENT ARE NOT
 CONSIDERED SIGNED AND SEALED AND THE SIGNATURE MUST BE
 VERIFIED ON ANY ELECTRONIC COPIES TO THE BEST OF MY
 KNOWLEDGE. THESE DRAWINGS AND THE PROJECT MANUAL ARE
 COMPLETE AND COMPLY WITH THE 2017 FLORIDA BUILDING CODE.

REVISIONS	DATE

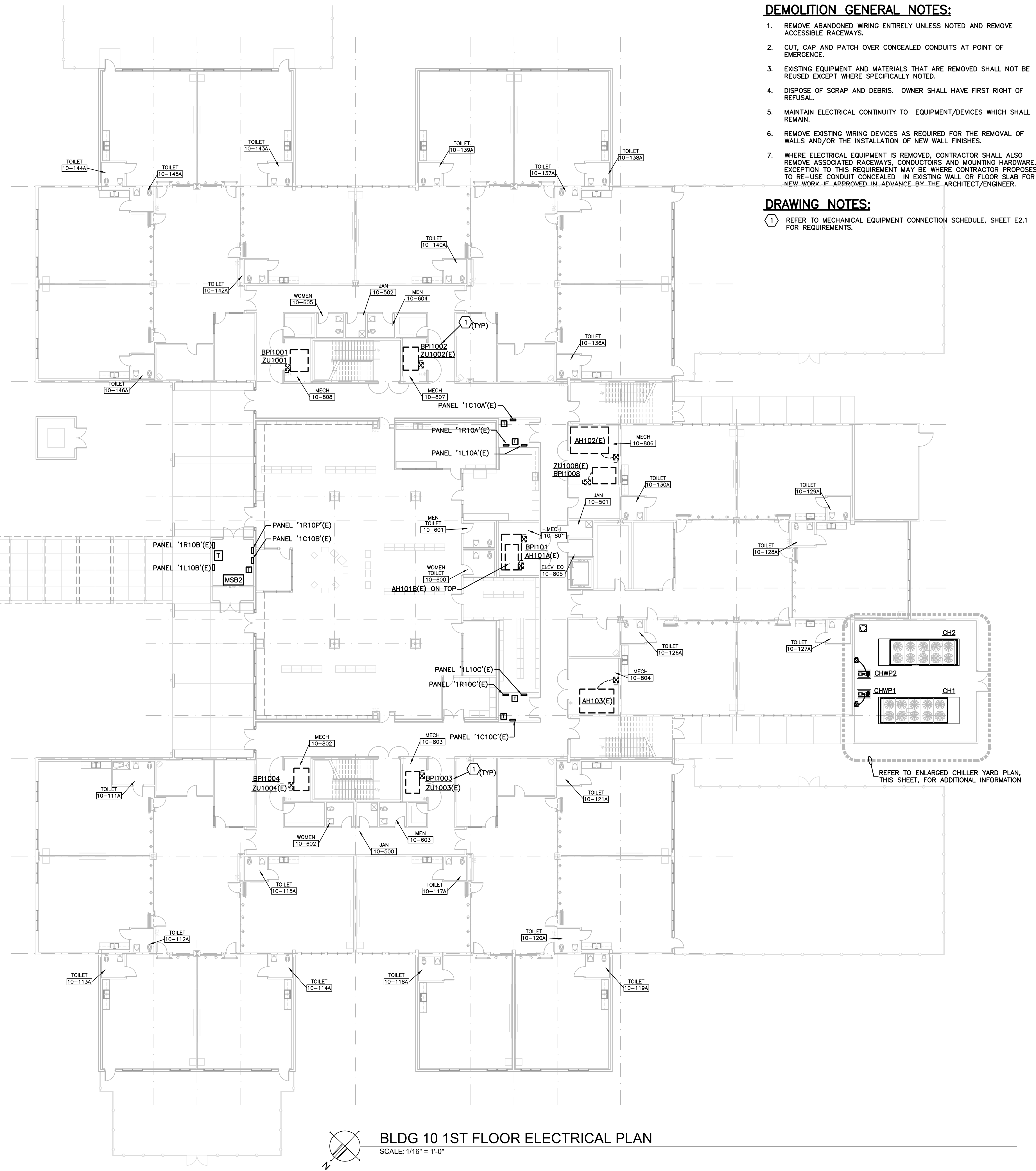
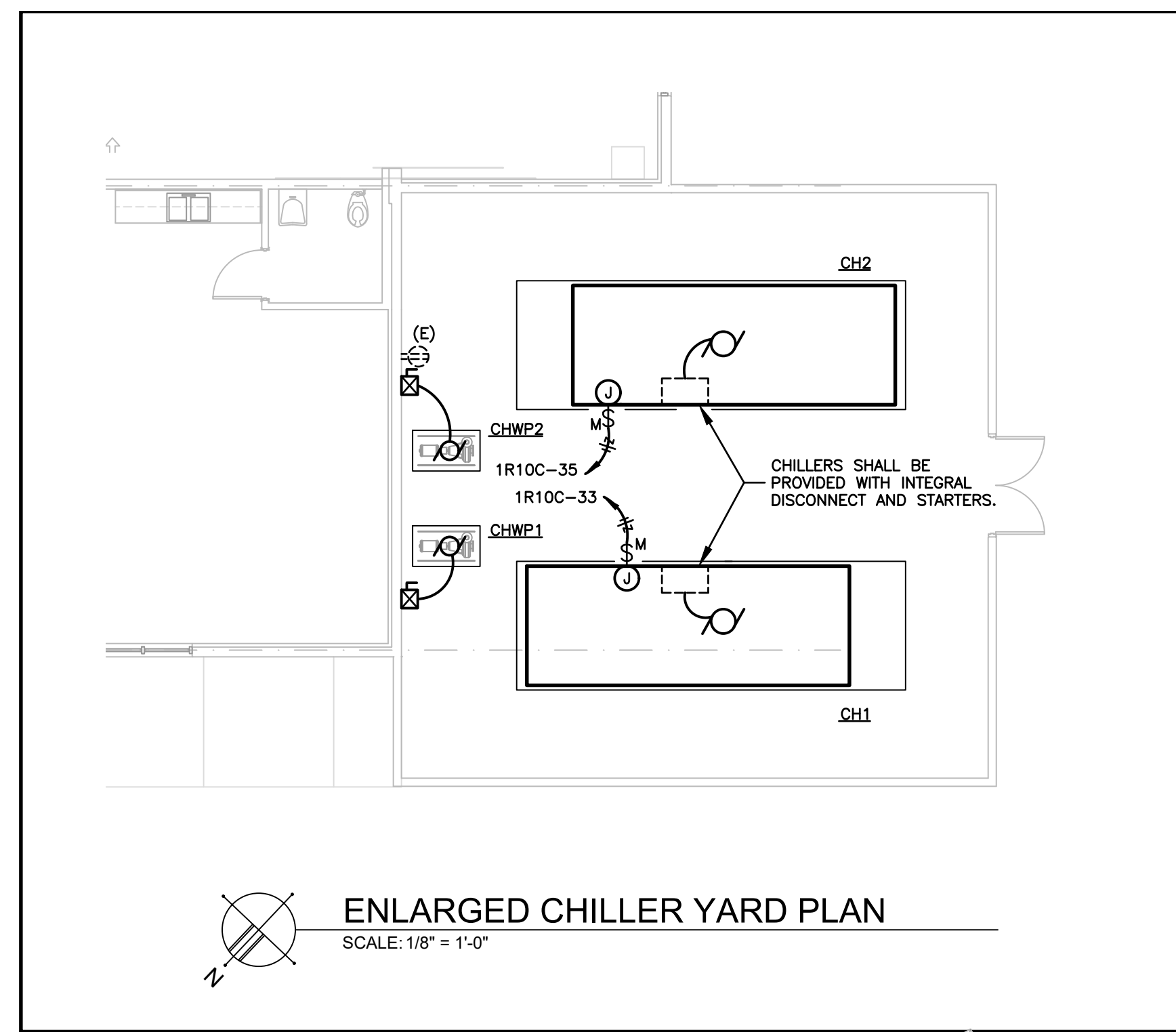
**Key Largo School
Chiller Replacement**
Monroe County School District
 241 Trumbo Road, Key West, Florida 33040

BUILDING BRIDGES
 TO SUCCESS

ELECTRICAL LEGEND, GENERAL NOTES, AND DETAILS

AGI
 Anston-Greenlees, Inc.
 Mechanical & Electrical Consulting Engineers
 1101 W. 7th Avenue, Suite 100
 Ft. Lauderdale, FL 33304
 Phone: 954.581.1111 Fax: 954.581.1112

DRAWN	TRG
CHECKED	RCA
DATE	02.19.2020
SCALE	AS NOTED
JOB NO.	19070
DRAWING NO.	E0.1



DEMOLITION GENERAL NOTES:

1. REMOVE ABANDONED WIRING ENTIRELY UNLESS NOTED AND REMOVE ACCESSIBLE RACEWAYS.
2. CUT, CAP AND PATCH OVER CONCEALED CONDUITS AT POINT OF EMERGENCE.
3. EXISTING EQUIPMENT AND MATERIALS THAT ARE REMOVED SHALL NOT BE REUSED EXCEPT WHERE SPECIFICALLY NOTED.
4. DISPOSE OF SCRAP AND DEBRIS. OWNER SHALL HAVE FIRST RIGHT OF REFUSAL.
5. MAINTAIN ELECTRICAL CONTINUITY TO EQUIPMENT/DEVICES WHICH SHALL REMAIN.
6. REMOVE EXISTING WIRING DEVICES AS REQUIRED FOR THE REMOVAL OF WALLS AND/OR THE INSTALLATION OF NEW WALL FINISHES.
7. WHERE ELECTRICAL EQUIPMENT IS REMOVED, CONTRACTOR SHALL ALSO REMOVE ASSOCIATED RACEWAYS, CONDUITORS AND MOUNTING HARDWARE. EXCEPTION TO THIS REQUIREMENT MAY BE WHERE CONTRACTOR PROPOSES TO RE-USE CONDUIT CONCEALED IN EXISTING WALL OR FLOOR SLAB FOR NEW WORK IF APPROVED IN ADVANCE BY THE ARCHITECT/ENGINEER.

DRAWING NOTES:

- ① REFER TO MECHANICAL EQUIPMENT CONNECTION SCHEDULE, SHEET E2.1 FOR REQUIREMENTS.

REVISIONS	DATE

**Key Largo School
Chiller Replacement**

Monroe County School District
241 Trumbo Road, Key West, Florida 33040

BUILDING BRIDGES TO SUCCESS

BUILDING 10 1ST FLOOR ELECTRICAL PLAN

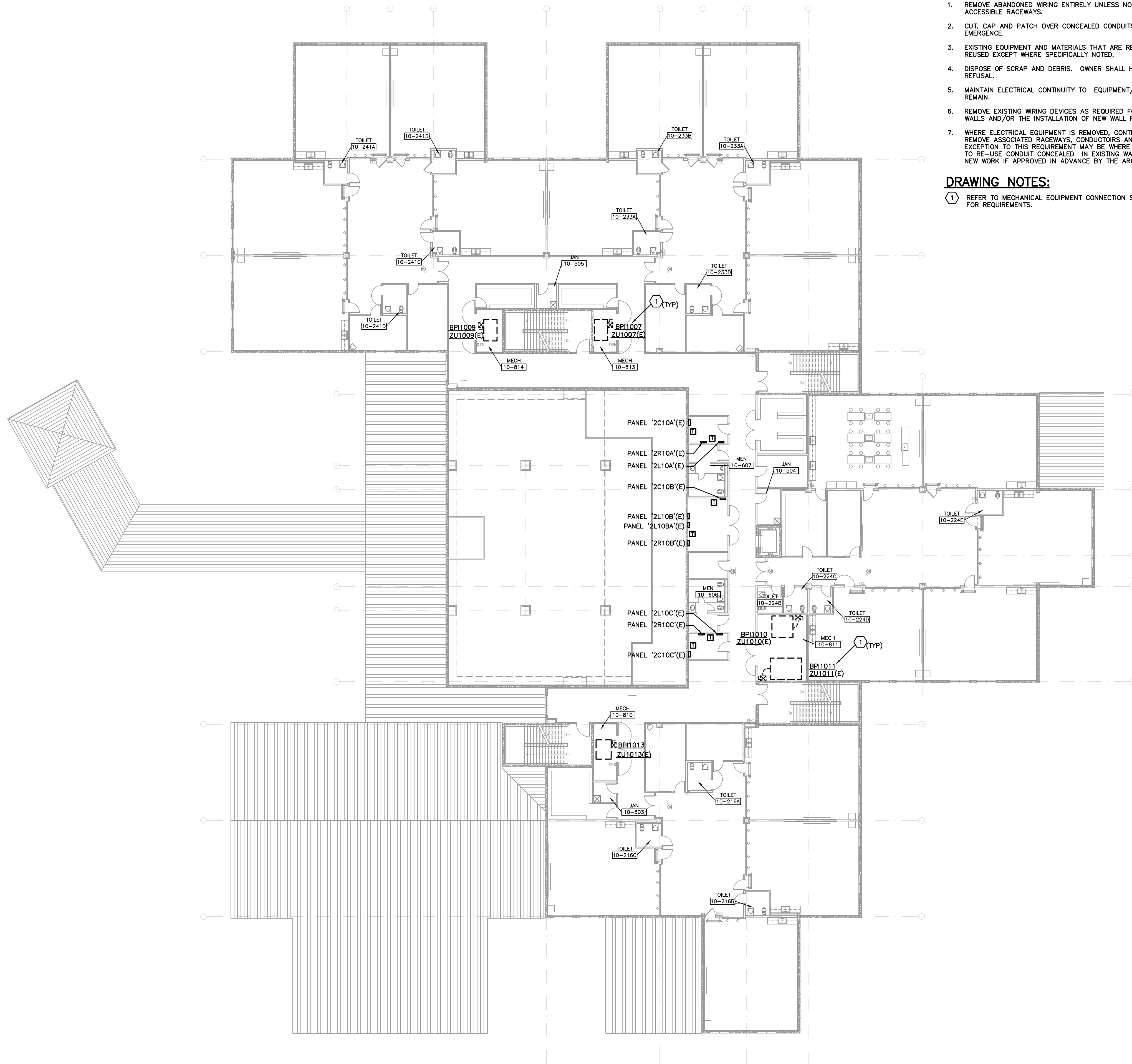
AGI Anston-Greenlees, Inc.
Mechanical & Electrical Consulting Engineers
10000 SW 15th Avenue, Suite 100, Miami, FL 33186
Phone: 305-859-1100 | Fax: 305-859-1101 | www.agi-engineers.com

DRAWN	TRG
CHECKED	RCA
DATE	02.19.2020
SCALE	AS NOTED
JOB NO.	19070
DRAWING NO.	E1.1

Drawing File: I:\Projects\19070\Bldg 10\19070_01.dwg E1.1
 Printed by: chris Feb 19, 2020 - 6:03pm

THIS ITEM HAS BEEN ELECTRONICALLY SIGNED AND SEALED BY ROBERT C. ANSTON, P.E. ON THE DATE/TIME STAMP SHOWN USING A DIGITAL SIGNATURE. PRINTED COPIES OF THIS DOCUMENT ARE NOT CONSIDERED SIGNED AND SEALED AND THE SIGNATURE MUST BE VERIFIED ON ANY ELECTRONIC COPIES TO THE BEST OF MY KNOWLEDGE. THESE DRAWINGS AND THE PROJECT MANUAL ARE COMPLETE AND COMPLY WITH THE 2017 FLORIDA BUILDING CODE.

Plotting File: \\19000\19070\001\19070-12.dwg E12
 Plotted by: drc Feb 19, 2020 6:00pm



BLDG 10 2ND FLOOR ELECTRICAL PLAN
 SCALE: 1/16" = 1'-0"

DEMOLITION GENERAL NOTES:

1. REMOVE ABANDONED WIRING ENTIRELY UNLESS NOTED AND REMOVE ACCESSIBLE RACEWAYS.
2. CUT, CAP AND PATCH OVER CONCEALED CONDUITS AT POINT OF EMERGENCE.
3. EXISTING EQUIPMENT AND MATERIALS THAT ARE REMOVED SHALL NOT BE REUSED EXCEPT WHERE SPECIFICALLY NOTED.
4. DISPOSE OF SCRAP AND DEBRIS. OWNER SHALL HAVE FIRST RIGHT OF REFUSAL.
5. MAINTAIN ELECTRICAL CONTINUITY TO EQUIPMENT/DEVICES WHICH SHALL REMAIN.
6. REMOVE EXISTING WIRING DEVICES AS REQUIRED FOR THE REMOVAL OF WALLS AND/OR THE INSTALLATION OF NEW WALL FINISHES.
7. WHERE ELECTRICAL EQUIPMENT IS REMOVED, CONTRACTOR SHALL ALSO REMOVE ASSOCIATED RACEWAYS, CONDUITORS AND MOUNTING HARDWARE. EXCEPTION TO THIS REQUIREMENT MAY BE WHERE CONTRACTOR PROPOSES TO RE-USE CONDUIT CONCEALED IN EXISTING WALL OR FLOOR SLAB FOR NEW WORK IF APPROVED IN ADVANCE BY THE ARCHITECT/ENGINEER.

DRAWING NOTES:

- ① REFER TO MECHANICAL EQUIPMENT CONNECTION SCHEDULE, SHEET E2.1 FOR REQUIREMENTS.

REVISIONS	DATE

**Key Largo School
 Chiller Replacement**

Monroe County School District
 241 Trumbo Road, Key West, Florida 33040



**BUILDING BRIDGES
 TO SUCCESS**

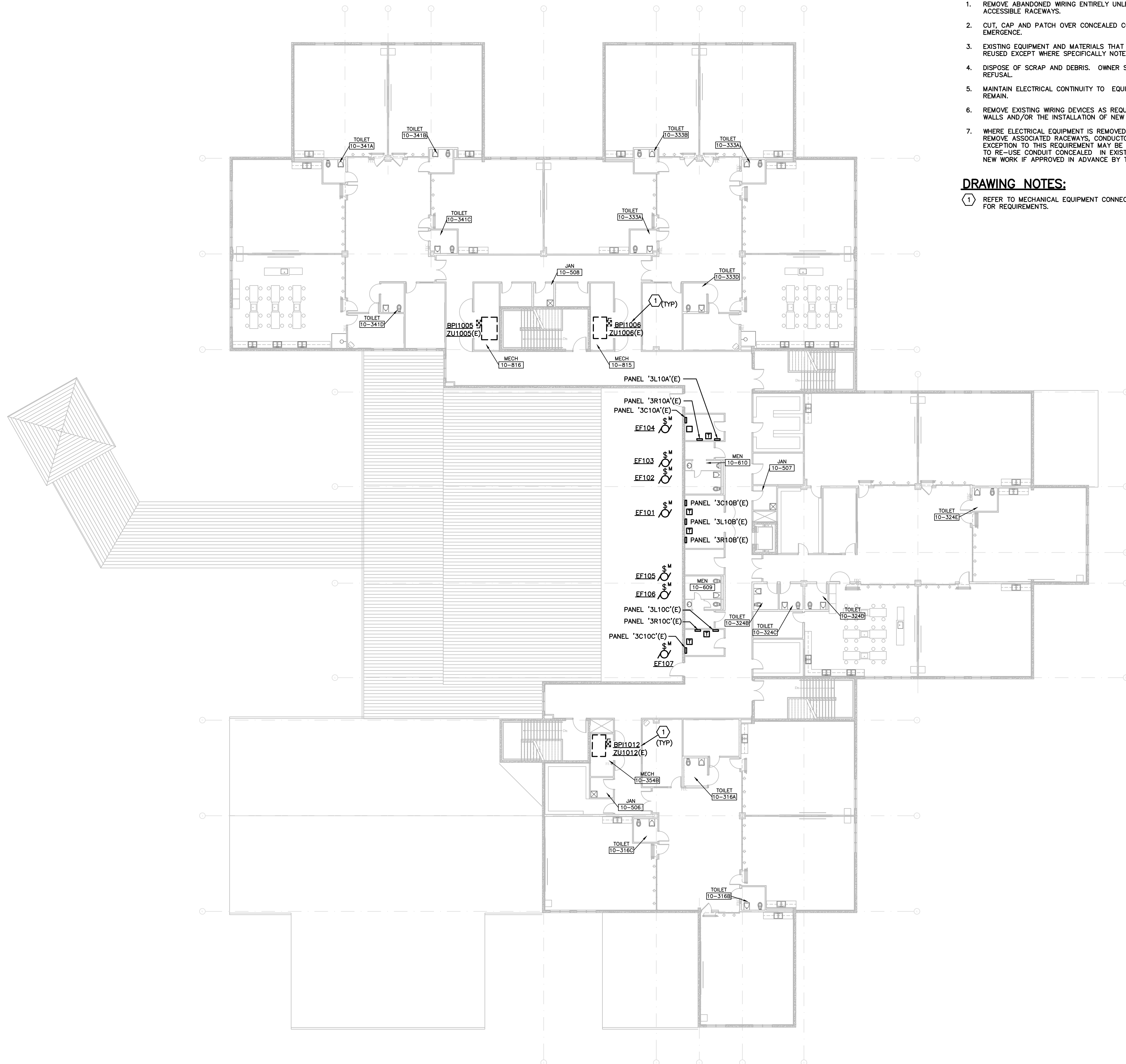
BUILDING 10 2ND FLOOR ELECTRICAL PLAN

Anston-Greenlees, Inc.
 Mechanical & Electrical Consulting Engineers
 11117 27th Ave SW, Palm Bay, FL 32909
 Phone: 888.222.2222
AGI

DRAWN	TRG
CHECKED	RCA
DATE	02.19.2020
SCALE	AS NOTED
JOB NO.	19070
DRAWING NO.	E1.2

THIS ITEM HAS BEEN ELECTRONICALLY SIGNED AND SEALED BY ROBERT C. ANSTON, P.E. ON THE DATE/TIME STAMP SHOWN USING A DIGITAL SIGNATURE. PRINTED COPIES OF THIS DOCUMENT ARE NOT CONSIDERED SIGNED AND SEALED AND THE SIGNATURE MUST BE VERIFIED ON ANY ELECTRONIC COPIES TO THE BEST OF MY KNOWLEDGE. THESE DRAWINGS AND THE PROJECT MANUAL ARE COMPLETE AND COMPLY WITH THE 2017 FLORIDA BUILDING CODE.

Plotting File: \\19206\19206\021\19206_13.dwg E13
 Plotted by: drc Feb 19, 2020 6:00pm



BLDG 10 3RD FLOOR ELECTRICAL PLAN
 SCALE: 1/16" = 1'-0"

DEMOLITION GENERAL NOTES:

1. REMOVE ABANDONED WIRING ENTIRELY UNLESS NOTED AND REMOVE ACCESSIBLE RACEWAYS.
2. CUT, CAP AND PATCH OVER CONCEALED CONDUITS AT POINT OF EMERGENCE.
3. EXISTING EQUIPMENT AND MATERIALS THAT ARE REMOVED SHALL NOT BE REUSED EXCEPT WHERE SPECIFICALLY NOTED.
4. DISPOSE OF SCRAP AND DEBRIS. OWNER SHALL HAVE FIRST RIGHT OF REFUSAL.
5. MAINTAIN ELECTRICAL CONTINUITY TO EQUIPMENT/DEVICES WHICH SHALL REMAIN.
6. REMOVE EXISTING WIRING DEVICES AS REQUIRED FOR THE REMOVAL OF WALLS AND/OR THE INSTALLATION OF NEW WALL FINISHES.
7. WHERE ELECTRICAL EQUIPMENT IS REMOVED, CONTRACTOR SHALL ALSO REMOVE ASSOCIATED RACEWAYS, CONDUCTORS AND MOUNTING HARDWARE. EXCEPTION TO THIS REQUIREMENT MAY BE WHERE CONTRACTOR PROPOSES TO RE-USE CONDUIT CONCEALED IN EXISTING WALL OR FLOOR SLAB FOR NEW WORK IF APPROVED IN ADVANCE BY THE ARCHITECT/ENGINEER.

DRAWING NOTES:

- 1 REFER TO MECHANICAL EQUIPMENT CONNECTION SCHEDULE, SHEET E2.1 FOR REQUIREMENTS.

REVISIONS	DATE

**Key Largo School
 Chiller Replacement**

Monroe County School District
 241 Trumbo Road, Key West, Florida 33040



BUILDING BRIDGES
 TO SUCCESS

BUILDING 10 3RD FLOOR ELECTRICAL PLAN

Anston-Greenlee, Inc.
 Mechanical & Electrical Consulting Engineers
 11117 27th Avenue, Suite 100
 Fort Lauderdale, FL 33324
 Phone: 954-575-1111
 Fax: 954-575-1112
 www.anston-greenlee.com

AGI

DRAWN	TRG
CHECKED	RCA
DATE	02.19.2020
SCALE	AS NOTED
JOB NO.	19070
DRAWING NO.	E1.3

THIS ITEM HAS BEEN ELECTRONICALLY SIGNED AND SEALED BY ROBERT C. ANSTON, P.E. ON THE DATE/TIME STAMP SHOWN USING A DIGITAL SIGNATURE. PRINTED COPIES OF THIS DOCUMENT ARE NOT CONSIDERED SIGNED AND SEALED AND THE SIGNATURE MUST BE VERIFIED ON ANY ELECTRONIC COPIES TO THE BEST OF MY KNOWLEDGE. THESE DRAWINGS AND THE PROJECT MANUAL ARE COMPLETE AND COMPLY WITH THE 2017 FLORIDA BUILDING CODE.

EXISTING PANEL '1L10B' BUILDING 10

PANEL: 1L10B		3PH,4W												MLO: 400 AMPS							
AIC RATING: EXIST AMPS														MCB: 0							
SERVICE: 277/480 V.																					
DESCRIPTION	KVA	BKR	CKT	A	B	C	CKT	BKR	KVA	DESCRIPTION	KVA	BKR	CKT	A	B	C	CKT	BKR	KVA	DESCRIPTION	
E LGT: MEDIA, 1902, 11, 12	3.1	20	1				2	3P	3	A/C; AH101											
E LGT: MEDIA CENTER	3.2	20	3				4	20	3	A/C; AH101											
E LGT: MEDIA CENTER	2.3	20	5				6	"	3	A/C; AH101											
E LGT: EXTERIOR WALL PACK	3	20	7				8	3P	15	EQ; EWH4											
E LGT: EXTERIOR WALL PACK	3	20	9				10	70	15	EQ; EWH4											
E LGT: PARKING	1.4	2P	11				12	"	15	EQ; EWH4											
E LGT: PARKING	1.4	2P	13				14	3P	35.9	PNL 1R10B											
E LGT: PARKING	1.4	2P	15				16	350	35.2	PNL 1R10B											
E LGT: PARKING	1.4	2P	17				18	"	59.4	PNL 1R10B											
E LGT: PARKING	1.8	2P	19				20	3P	0	PNL 1C10B											
E LGT: PARKING	1.8	2P	21				22	50	0	PNL 1C10B											
E LGT: EXTERIOR WALKWAY	1.1	20	23				24	"	0	PNL 1C10B											
R MTR: CHWP2	9.4	3P	25				26	3P	9.4	MTR: CHWP1											
R MTR: CHWP2	9.4	3P	27				28	70	9.4	MTR: CHWP1											
E SPACE	0	--	31				32	--	0	SPACE											
E SPACE	0	--	33				34	--	0	SPACE											
E SPARE	0	20	35				36	20	0	SPARE											
E SPARE	0	20	37				38	20	0	SPARE											
E SPARE	0	20	39				40	20	0	SPARE											
E SPARE	0	20	41				42	20	0	SPARE											
E SPARE	0	20	43				44	20	0	SPARE											
E SPARE	0	20	45				46	20	0	SPARE											
E SPARE	0	20	47				48	20	0	SPARE											
E SPARE	0	20	49				50	20	0	SPARE											
E SPARE	0	20	51				52	20	0	SPARE											
E SPARE	0	20	53				54	20	0	SPARE											
E SPARE	0	20	55				56	20	0	SPARE											
E SPARE	0	20	57				58	20	0	SPARE											
E SPARE	0	20	59				60	20	0	SPARE											
E SPARE	0	20	61				62	20	0	SPARE											
E SPARE	0	20	63				64	20	0	SPARE											
E SPARE	0	20	65				66	20	0	SPARE											
E SPARE	0	20	67				68	20	0	SPARE											
E SPARE	0	20	69				70	20	0	SPARE											
E SPARE	0	20	71				72	20	0	SPARE											
E SPARE	0	20	73				74	20	0	SPARE											
E SPARE	0	20	75				76	20	0	SPARE											
E SPARE	0	20	77				78	20	0	SPARE											
E SPARE	0	20	79				80	20	0	SPARE											
E SPARE	0	20	81				82	20	0	SPARE											
E SPARE	0	20	83				84	20	0	SPARE											
E SPARE	0	20	85				86	20	0	SPARE											
E SPARE	0	20	87				88	20	0	SPARE											
E SPARE	0	20	89				90	20	0	SPARE											
E SPARE	0	20	91				92	20	0	SPARE											
E SPARE	0	20	93				94	20	0	SPARE											
E SPARE	0	20	95				96	20	0	SPARE											
E SPARE	0	20	97				98	20	0	SPARE											
E SPARE	0	20	99				100	20	0	SPARE											
E SPARE	0	20	101				102	20	0	SPARE											
E SPARE	0	20	103				104	20	0	SPARE											
E SPARE	0	20	105				106	20	0	SPARE											
E SPARE	0	20	107				108	20	0	SPARE											
E SPARE	0	20	109				110	20	0	SPARE											
E SPARE	0	20	111				112	20	0	SPARE											
E SPARE	0	20	113				114	20	0	SPARE											
E SPARE	0	20	115				116	20	0	SPARE											
E SPARE	0	20	117				118	20	0	SPARE											
E SPARE	0	20	119				120	20	0	SPARE											
E SPARE	0	20	121				122	20	0	SPARE											
E SPARE	0	20	123				124	20	0	SPARE											
E SPARE	0	20	125				126	20	0	SPARE											
E SPARE	0	20	127				128	20	0	SPARE											
E SPARE	0	20	129				130	20	0	SPARE											
E SPARE	0	20	131				132	20	0	SPARE											
E SPARE	0	20	133				134	20	0	SPARE											
E SPARE	0	20	135				136	20	0	SPARE											
E SPARE	0	20	137				138	20	0	SPARE											
E SPARE	0	20	139				140	20	0	SPARE											
E SPARE	0	20	141				142	20	0	SPARE											
E SPARE	0	20	143				144	20	0	SPARE											
E SPARE	0	20	145				146	20	0	SPARE											
E SPARE	0	20	147				148	20	0	SPARE											
E SPARE	0	20	149				150	20	0	SPARE											
E SPARE	0	20	151				152	20	0	SPARE											
E SPARE	0	20	153				154	20	0	SPARE											
E SPARE	0	20	155				156	20	0	SPARE											
E SPARE	0	20	157				158	20	0	SPARE											
E SPARE	0	20	159				160	20	0	SPARE											
E SPARE	0	20	161				162	20	0	SPARE											
E SPARE	0	20	163				164	20	0	SPARE											
E SPARE	0	20	165				166	20	0	SPARE											
E SPARE	0	20	167				168	20	0	SPARE											
E SPARE	0	20	169				170	20	0	SPARE											
E SPARE	0	20	171				172	20	0	SPARE											
E SPARE	0	20	173				174	20	0	SPARE											
E SPARE	0	20	175				176	20	0	SPARE											
E SPARE	0	20	177				178	20	0	SPARE											
E SPARE	0	20	179				180	20	0	SPARE											
E SPARE	0	20	181				182	20	0	SPARE											
E SPARE	0	20	183				184	20	0	SPARE											
E SPARE	0	20	185				186	20	0	SPARE											
E SPARE	0	20	187				188	20	0	SPARE											
E SPARE	0	20	189				190	20	0	SPARE											
E SPARE	0	20	191				192	20	0	SPARE											
E SPARE	0	20	193				194	20	0	SPARE											
E SPARE	0	20	195				196	20	0	SPARE											
E SPARE	0	20	197				198	20	0	SPARE											
E SPARE	0	20	199				200	20	0	SPARE											
E SPARE	0	20	201				202	20	0	SPARE											
E SPARE	0	20	203				204	20	0	SPARE											
E SPARE	0	20	205				206	20	0	SPARE											
E SPARE	0	20	207		</																